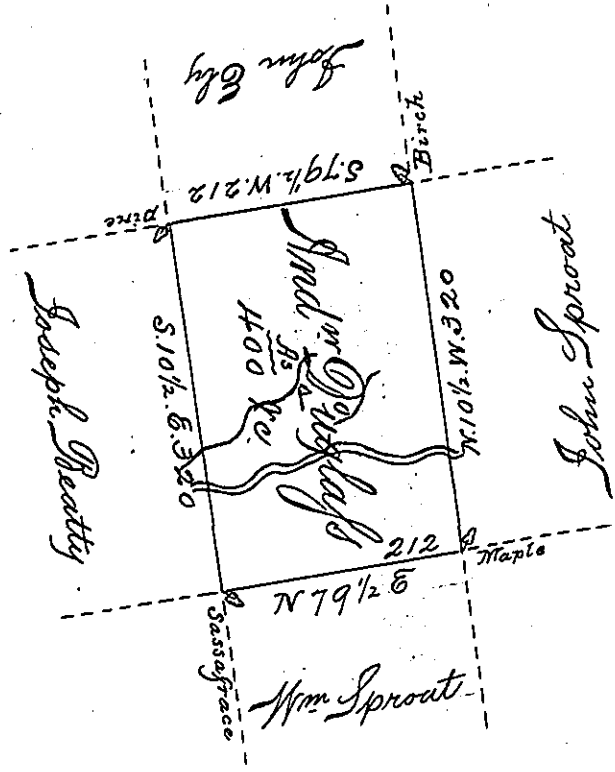


Hazle
Luzerne



Draft of a tract of land Called
 Situate on the Waters of awissey Creek in
 the County of Northum^d or Northamp^{sh} Con-
 taining Four Hundred Acres & Allon^e
 Surveyed for And^{rs} Douglass the 18th day of
 Oct^r 1793 by virtue of a Warrant dated the 10th
 July 1793
 by W^m Gray D.S.

Daniel Brodhead, Esq^r }
 Sur^r Gen^l }

IN TESTIMONY that the above is a copy of the original remaining on file in the
 Department of Internal Affairs of Pennsylvania, made con-
 formably to an Act of Assembly approved the 16th day of
 February, 1833, I have hereunto set my Hand and caused
 the Seal of said Department to be affixed at Harrisburg, this

Second day of June 1896

James W. Fatta
 Secretary of Internal Affairs.